



# Ridge Creek Fire

Idaho Panhandle National Forests, Coeur d'Alene River Ranger District

Fire Information 208-953-7022

Media Information 989-292-9373

[2023.ridgecreek@firenet.gov](mailto:2023.ridgecreek@firenet.gov)

<https://inciweb.nwcg.gov/incident-information/idipf-ridge-creek>

**August 9, 2023**

---

**Location:** Approximately 3.5 miles east of the north tip of Hayden Lake, along the Hayden Creek Road (FSR 437) in the Ridge Creek drainage

**Start Date:** 8/3/2023    **Cause:** Human/Under Investigation    **Size:** 1200 acres    **Containment:** 0%

**Total Personnel:** 173    **Engines:** 6    **Heavy Equipment:** 6    **Crews:** 4

**Yesterday the Kootenai Office of Emergency Management issued an alert defining an additional Ready area in the vicinity of Bunco Road. A map of the area is provided with this update and additional notes are provided below.**

**The Coeur d'Alene Dispatch Zone also issued Stage II Fire Restrictions in the Idaho panhandle. Additional information is provided with this update and noted below.**

Weather has been moderate over the last several days with substantial cloud cover and intermittent rains which has in turn moderated fire behavior. The fire area will see a warming trend over the weekend that will continue into the coming week. An approaching front today may result in gusty winds this afternoon which may contribute to areas of active fire behavior.

Hand crews will continue to work on the south end of the fire along Forest Service Road 437 (Hayden Creek Rd), tying this improved line to mechanical lines that were constructed along ridgeline tying into the road extending northward to the area of the Hudlow Saddle. Crews will continue to improve fireline using the FSR 406 road to the northeast of the fire, working to bring improved fireline around the north end of the fire to the Cedar Saddle. Fireline will extend south from the Cedar Saddle along FSR 625 (North Fork Rd) to FSR 437 (Hayden Creek Rd).

The infrared (IR) flight scheduled for last night was canceled due to cloud cover over the fire; a flight has been ordered for tonight. Fire size has not been updated due to the lack of an IR flight.

## EVACUATION STATUS

Yesterday, the Kootenai County Office of Emergency Management issued an alert to inform residents of the identification of an additional **READY, SET, GO** area in the vicinity of the Bunco Road area. This is in addition to the area defined to the west of the fire bordering Hayden Lake. Both areas are defined as **GET READY** status areas. In this case, residents are cautioned to heighten their awareness of fire information, be familiar with evacuation preparation and procedures should it become necessary, and consistently adhere to good fire prevention measures.

The Kootenai Office of Emergency Management provides the following direction for residents in these areas designated with a **GET READY** status: "Please continue to monitor official sources and call 208-446-2292 for any questions regarding evacuations. Follow Kootenai County Emergency Management Facebook Page for updates and sign up for automated Kootenai Alert for emergency alerts. <https://www.kcsheriff.com/186/Emergency-Management>."

A map of the revised Get Ready areas is included with this update below.

## CLOSURES AND SPECIAL MESSAGES

Yesterday the Coeur d'Alene Dispatch Zone issued Stage II Fire Restrictions across the Idaho panhandle. An infographic is included with this update that details the activities that are prohibited under the restriction.

Firefighting aircraft are actively engaged on multiple fires in the region and will continue to use area waterways, including Hayden Lake, for fire suppression efforts. This means that residents and recreational boaters are likely to see either helicopters or fixed-wing aircraft using the lake. For planes in particular, this requires a long, linear approach and exit from the lake. This restricts their ability to maneuver abruptly should watercraft be within their flight path, an obvious safety hazard. Pilots that have to deviate to avoid watercraft will also be delayed in acquiring water, inhibiting their fire suppression efforts. **All lake users should be on the lookout for approaching aircraft.** If firefighting aircraft are in the area, boaters should clear the center of the lake and move toward the shoreline.

The Idaho Panhandle National Forests issued an emergency closure (Closure Order #01-04-03-23-002) effective August 4, 2023. This Order is for public and firefighter safety due to heavy fire traffic on the area impacted on the Coeur d'Alene River Ranger District, and prohibits all methods of travel (foot, mechanized, motorized and stock) on Forest Service Roads 392, 428A, 437, 1511, 1530, 1552, 1587 and Forest Service Roads 206 and 406 north of their junction, Forest Service Trails 69, 78, 234, and 802 as well as within the described area.

## WEATHER AND FIRE BEHAVIOR

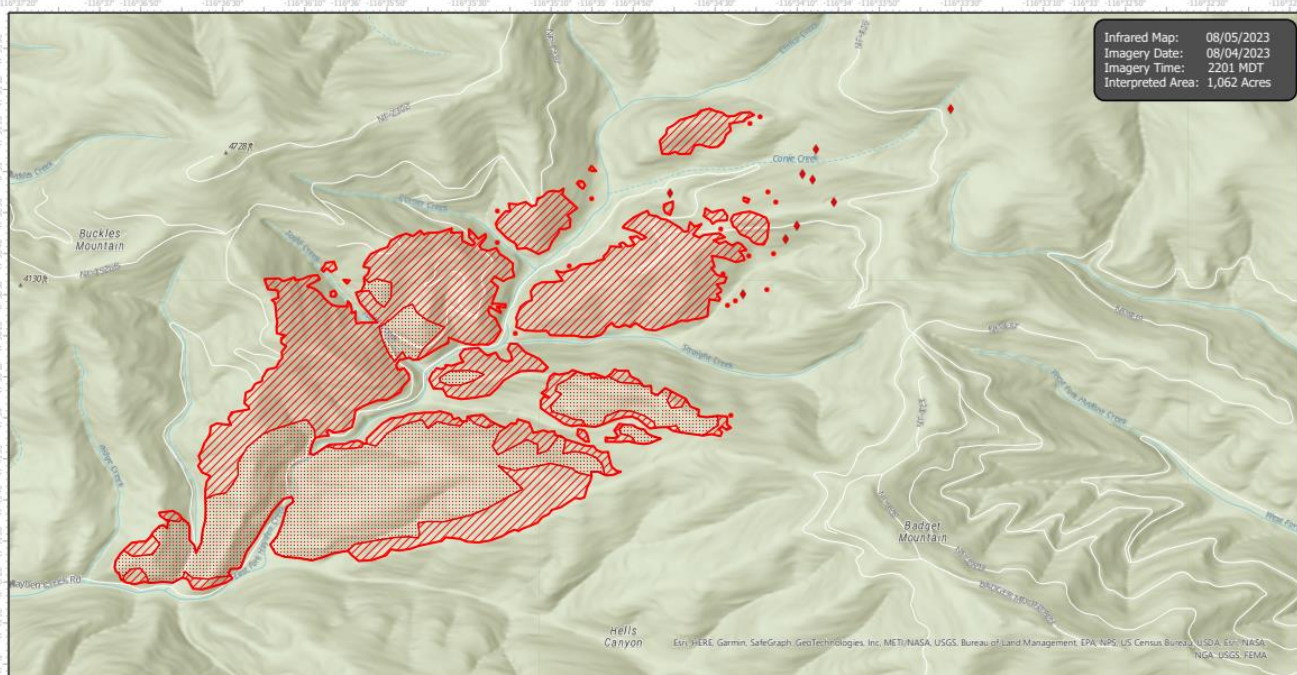
Partly to mostly cloudy skies with a 10% chance of precipitation. High of 76 degrees with a minimum relative humidity of 39%. Winds from the southwest 6 to 11 mph with afternoon gusts to 25 mph.

# RidgeCreek Infrared Map

Incident # (ID-IPF-000447)



Infrared Map: 08/05/2023  
Imagery Date: 08/04/2023  
Imagery Time: 2201 MDT  
Interpreted Area: 1,062 Acres



GCS WGS 1984

Scale: 1:24,000

0 1 2 Miles

IR Heat Perimeter  
IR Intense Heat  
IR Scattered Heat

IR Isolated Heat Source  
Possible IR Heat Source

Infrared Interrupter: Daniel LeVrier  
email: daniel.levrier@usda.gov

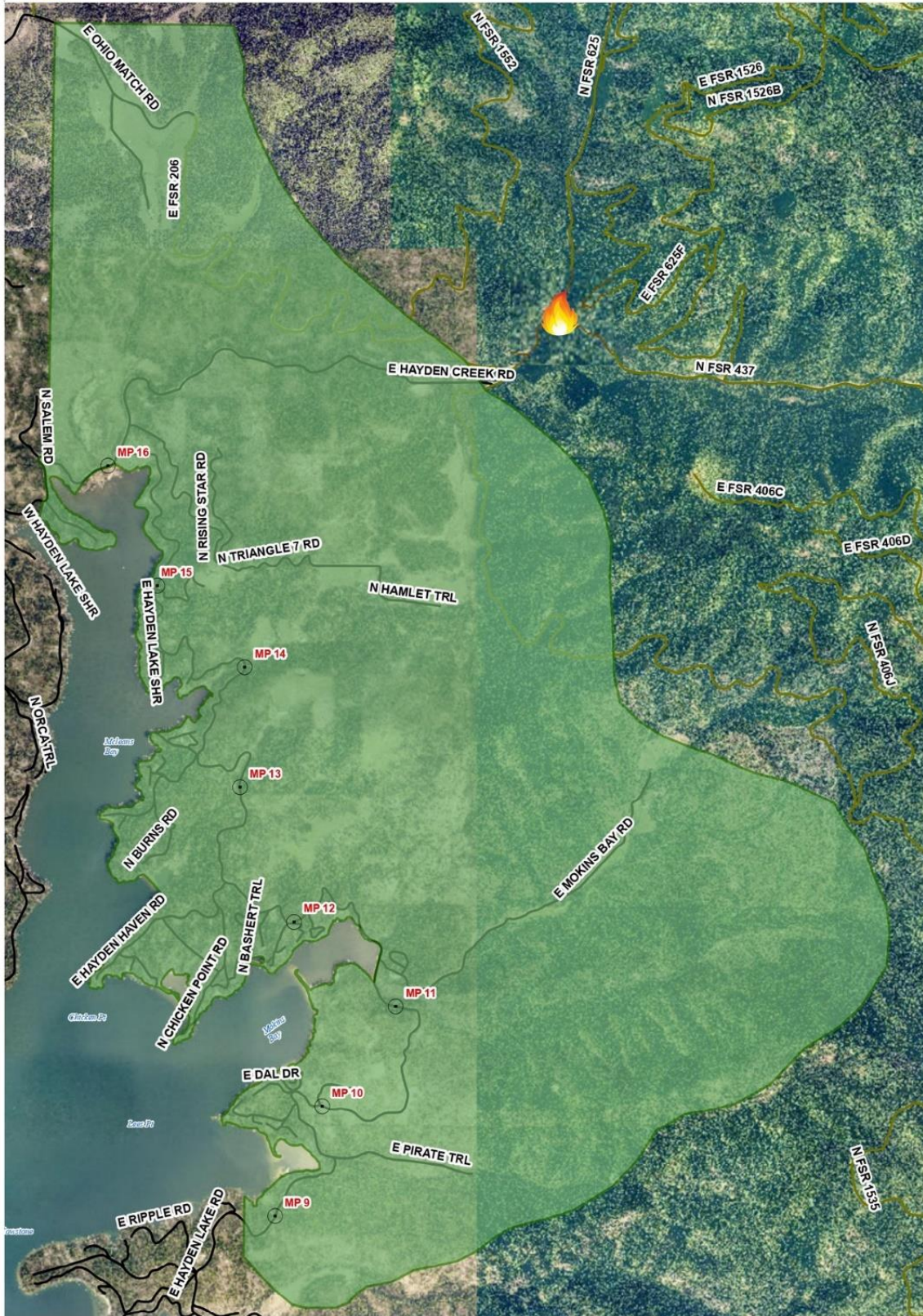




# Ridge Creek Fire

Level 1: Get Ready

Kootenai County  
August 4th, 2023



○ Mile Markers  
— LOCAL ROAD  
— SEASONAL ROAD

0 0.25 0.5 1 Miles

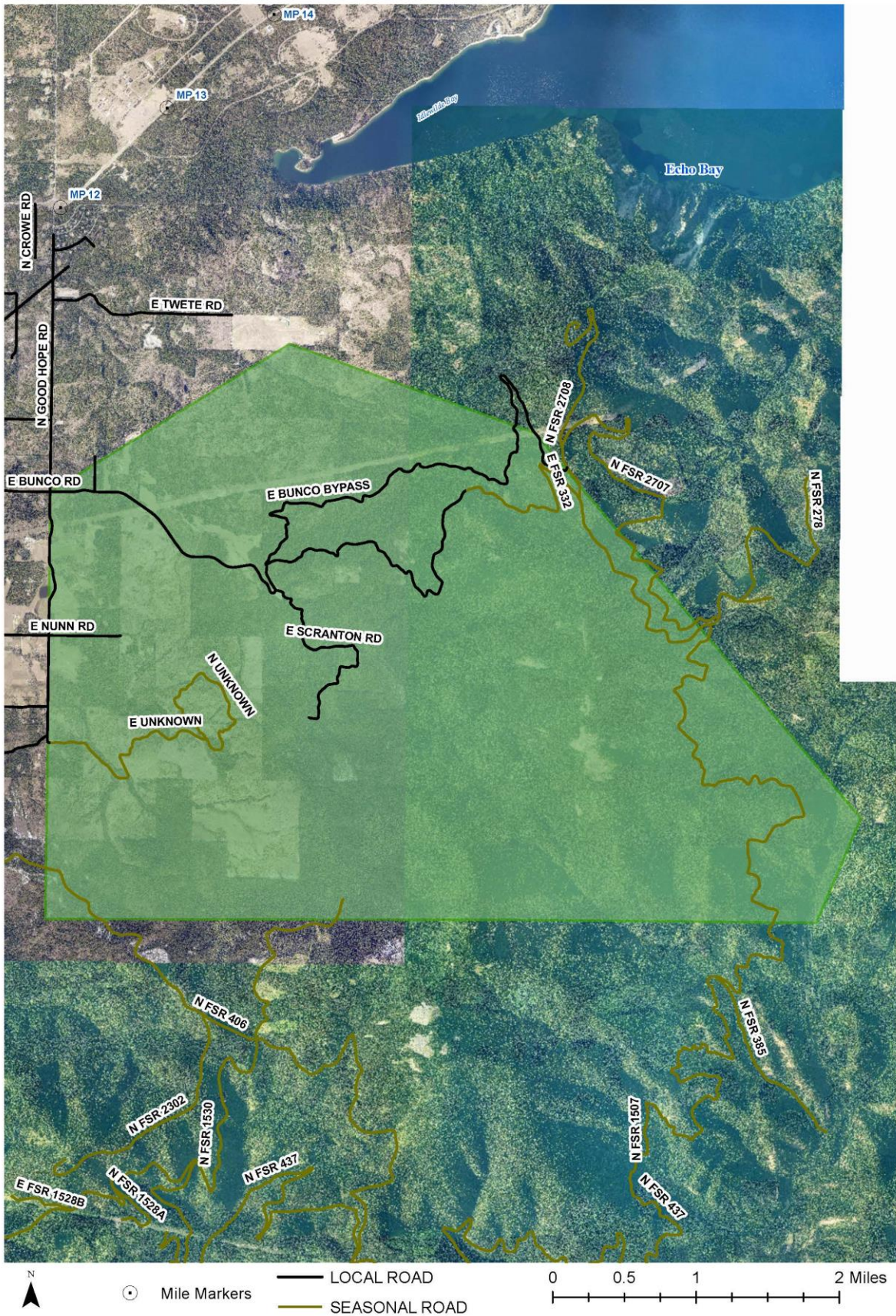




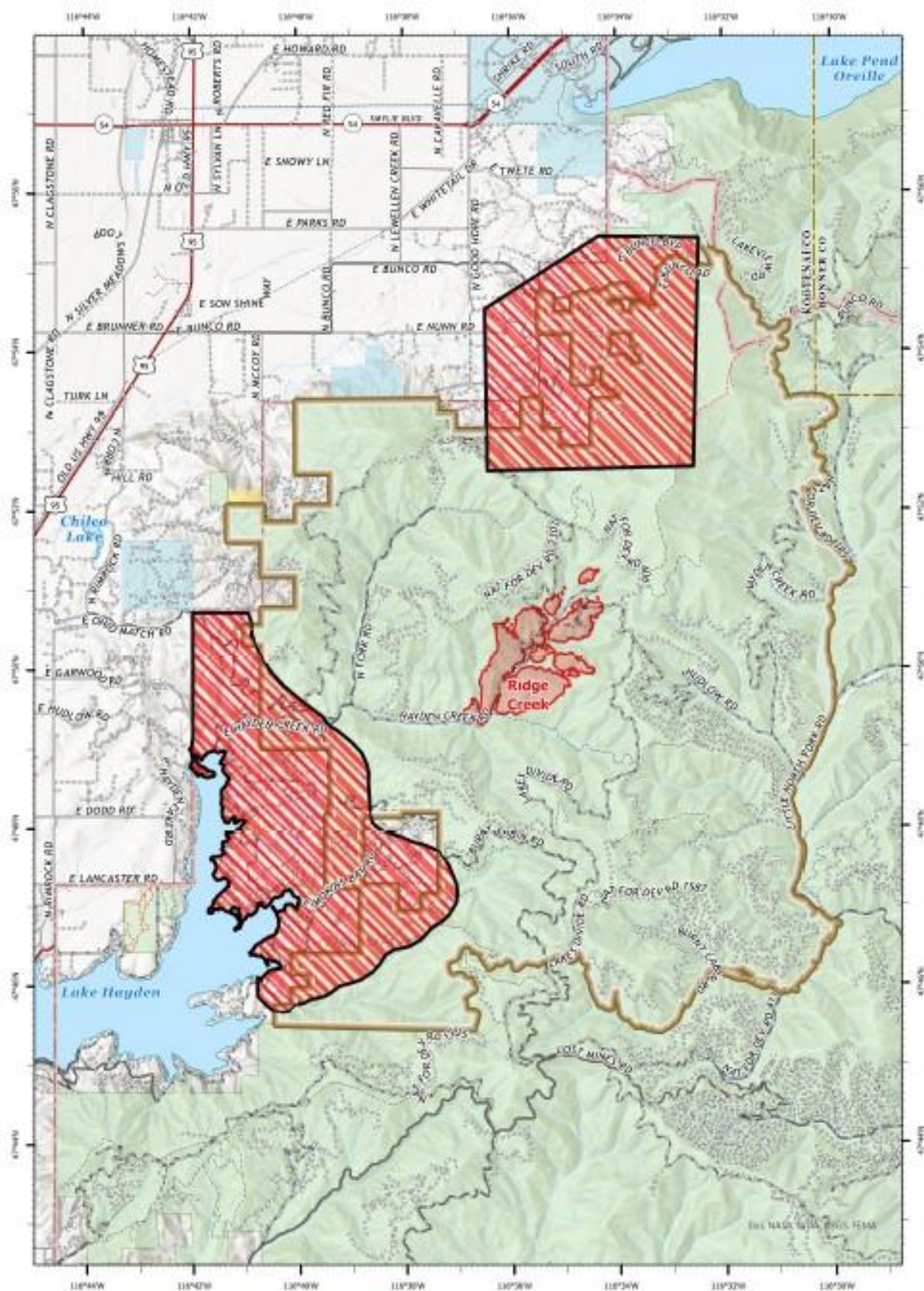
# Ridge Creek Fire - Bunco

Kootenai County  
August 8th, 2023

Level 1: Get Ready







**PIO**  
**Evacuation and Closures**  
**RIDGE CREEK**  
**IDIFF000447**  
**08/09/2023 Day**

1,973 acres as of 8/9/2023 @ 2:58 PST  
 Areas from: 87



0 0.75 1.5 3 Miles

- Outlets Area
- Wildfire Daily Fire Perimeter
- Bureau of Land Management (BLM)
- State
- US Forest Service (USFS)

**Evacuation Areas**

- Go
- Set
- Ready
- Order Lifted







## Idaho Panhandle National Forests

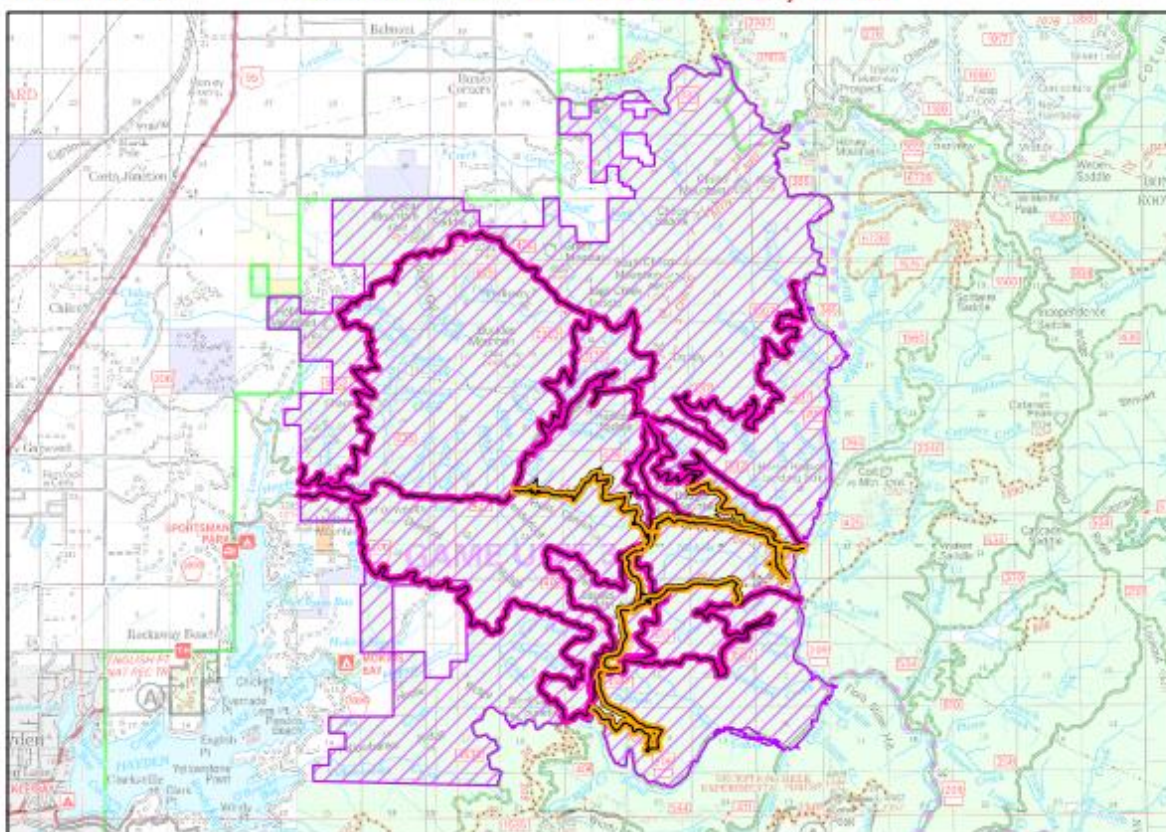


### Forest Closure: Ridge Creek Fire Closure Order Number: 01-04-03-23-002

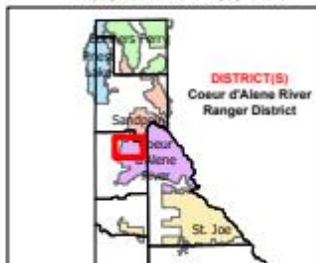
Effective Date : **AUGUST 4th, 2023**

Rescind Date : **SEPTEMBER 30th, 2023**

#### Exhibit A



#### IDAHO KOOTENAI COUNTY



#### Closed Road Numbers:

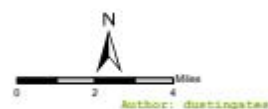
-206  
-392  
-406  
-428A  
-437  
-1511  
-1530  
-1552  
-1587

#### Closed Trail Numbers:

-69  
-78  
-234  
-802

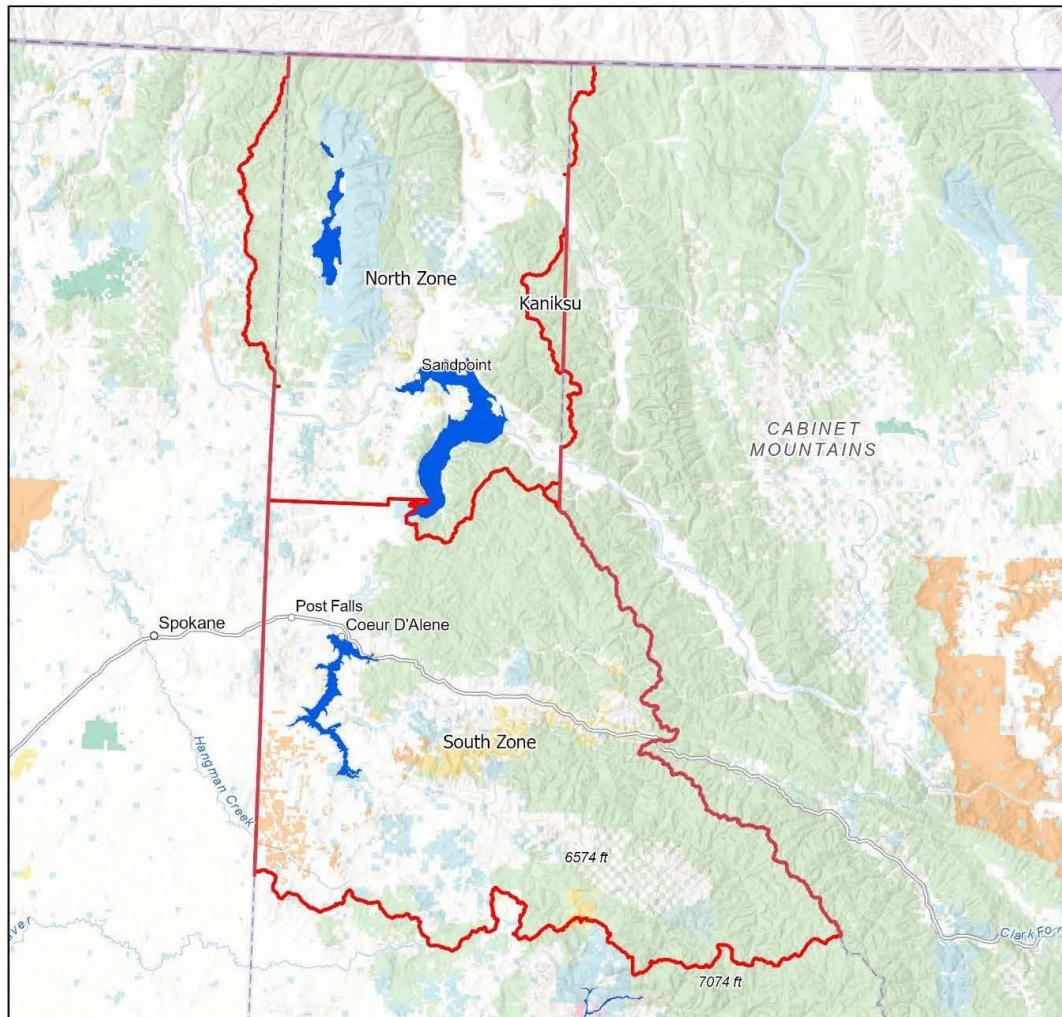
#### Closures

- Road
- Trail
- Area



# Coeur d'Alene

## Fire Restriction Areas



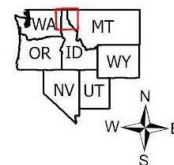
Date Created:  
05/18/2022

The surface management status should be used as a general guide only. Official lands records at the Bureau of Land Management (BLM) and other State and County offices should be checked for up-to-date information regarding any specific tract of lands.

No warranty is made by the Idaho Department of Lands (IDL) as to the accuracy, reliability, or completeness of these datasets for individual use or aggregation with other datasets.

Spatial Reference  
Name: WGS 1984 Web Mercator Auxiliary Sphere

0 5 10 20 30 40 Miles





# FIRE RESTRICTIONS



STAGE II RESTRICTIONS are in effect and **prohibit** the following:



## FIRES OR CHARCOAL

**Prohibited:** Building, maintaining, attending or using a fire, campfire, or stove fire.

**Exceptions:** Persons using a fire or stove fire fueled solely by liquid petroleum or LPG fuels. Such devices, including propane campfires, may be used only in an area **clear of flammable material**.



## SMOKING

**Prohibited:** Smoking outside an enclosed vehicle or building.

**Exceptions:** You can smoke while stopped in an area at least 3 feet in diameter that is barren or **cleared of all flammable materials**.



## Cross Country Travel

**Prohibited:** Operating motorized vehicles off designated roads and trails.



## Chainsaws/Other Equipment

**Prohibited:** The following acts are prohibited from 1:00 p.m. to 1:00 a.m. - Operating a chainsaw or other equipment powered by an internal combustion engine; blasting, welding, or other activities that generate flame or flammable material; or using an explosive.

**Remember – Fireworks are illegal on federal public lands.**



For more information contact your local fire agency